

# Parts Manual

Mfg. No: 1536-1  
2,100 PSI





---

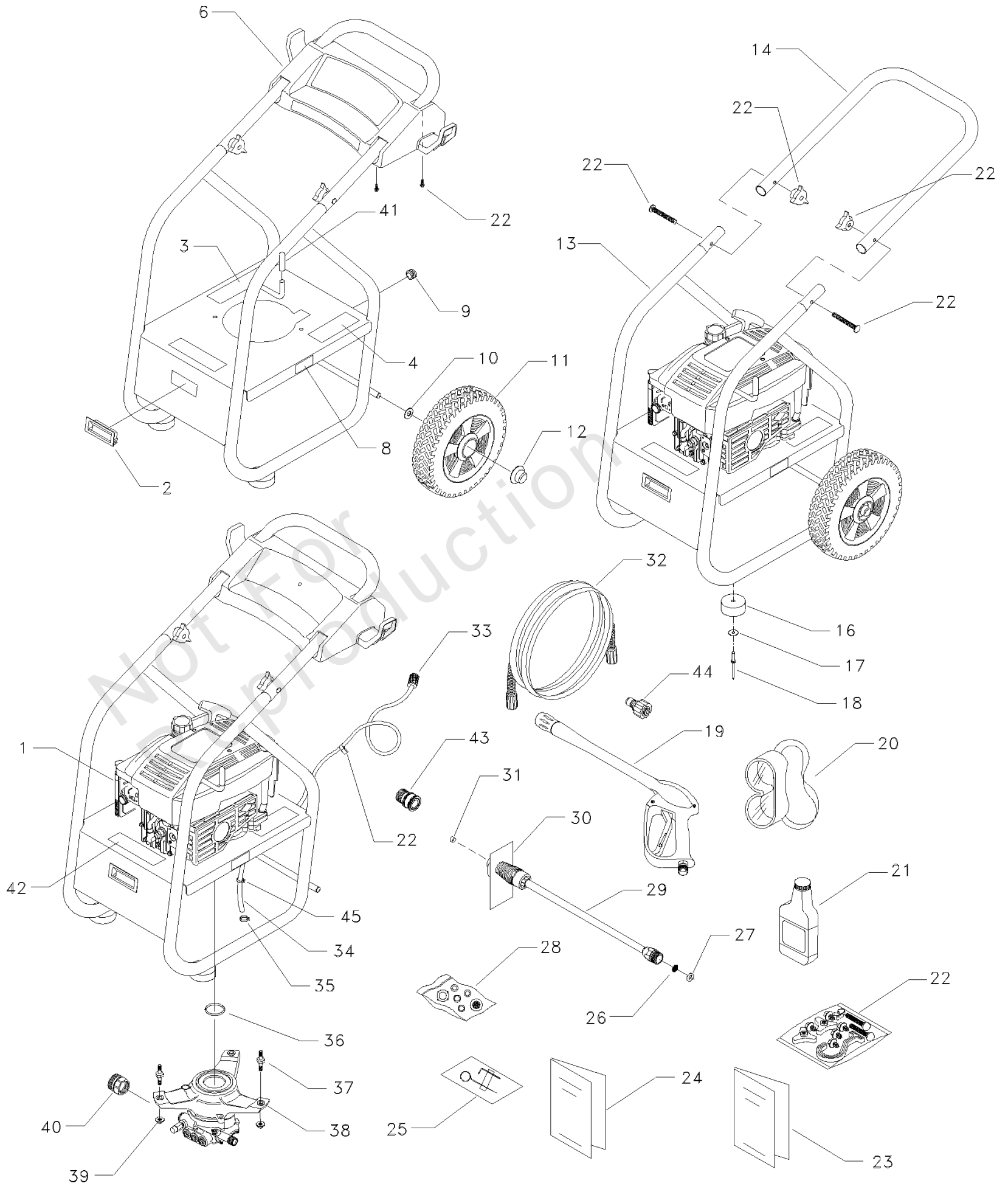
Model Components	Page
Main Unit.....	4
Pump.....	6
Torque Specification Chart.....	10

Not For  
Reproduction

# Main Unit

Note: Unless noted otherwise, use the standard torque specifications

Mfg. No: 1536-1



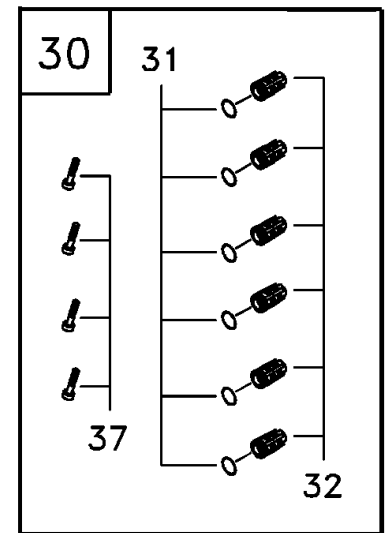
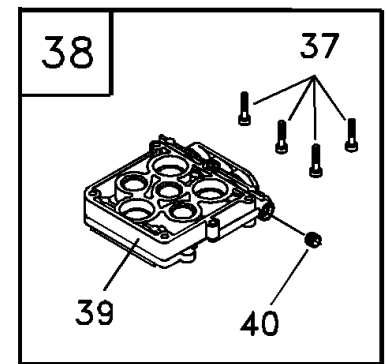
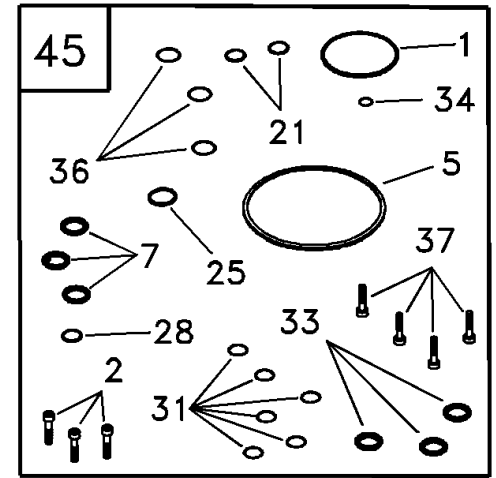
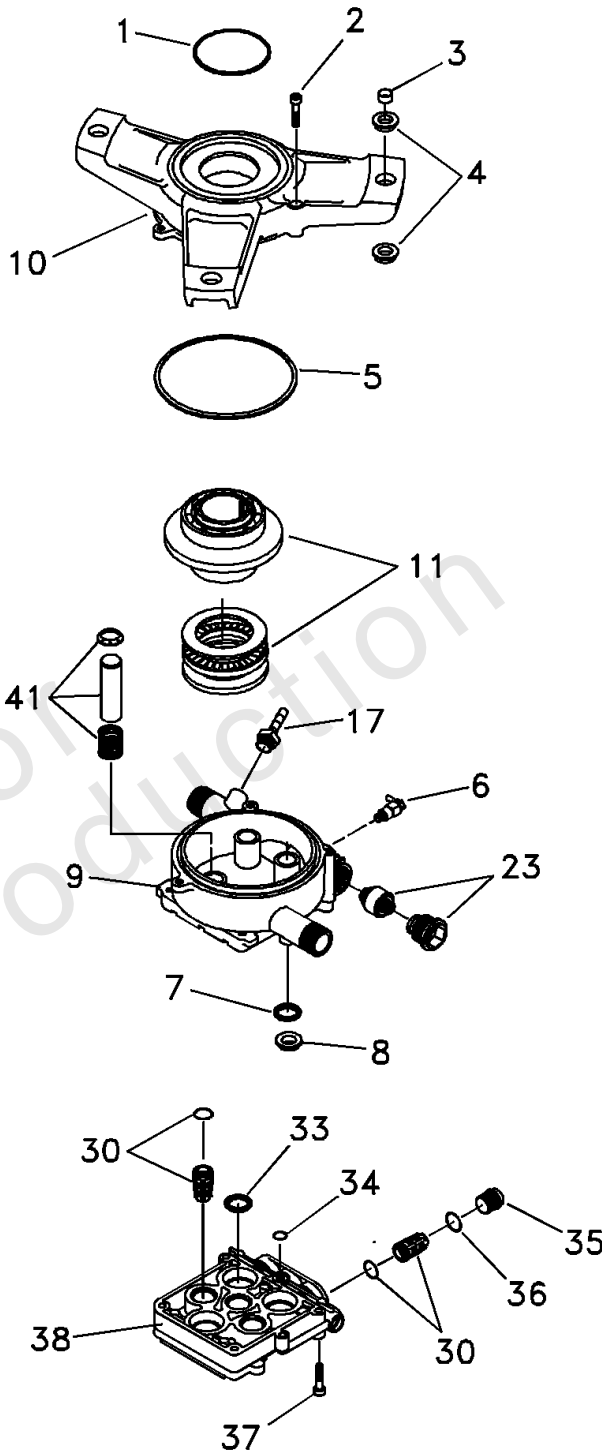
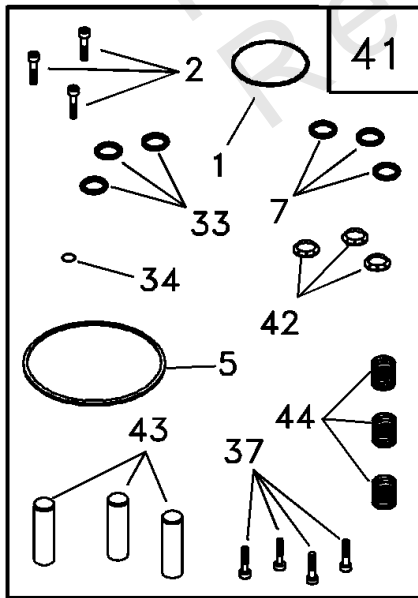
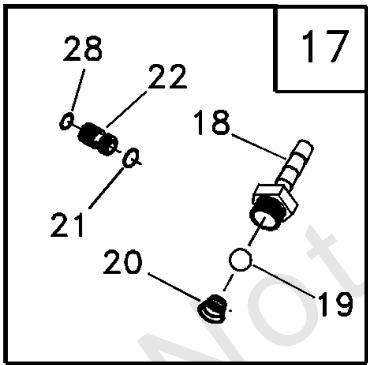
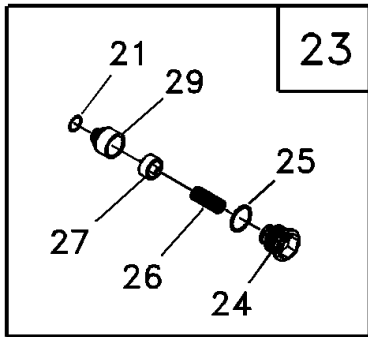
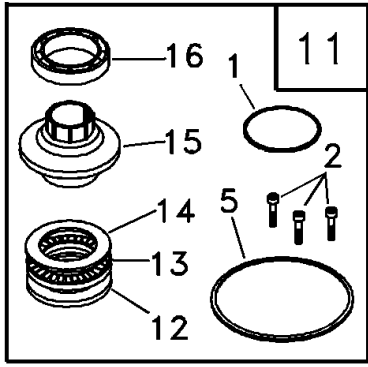
## Main Unit

REF NO	PART NO	QTY	DESCRIPTION
1	~NSP	1	ENGINE
2	187878GS	1	HANDLE, Lift
3	187915GS	1	DECAL, Warning/Decal
4	187916GS	1	DECAL, Start Instructions
6	187613GS	1	DECALS/BILLBOARD, 1536-1
8	187952GS	1	DECAL, Cool Down
9	30809GS	1	GROMMET
10	49808GS	2	WASHER, M12 Flat
11	B2142GS	2	TIRE, 2" X 9" Black Mag
12	75402GS	2	PUSHNUT, 1/2"
13	D187619GS	1	BASE, VSPW
14	D187602GS	1	HANDLE, PW
16	27007GS	2	MOUNT, Rubber Foot
17	71693GS	2	WASHER, Flat
18	188194GS	2	RIVET, Blind
19	B3263GS	1	GUN, High Pressure
20	87815GS	1	GOGGLES, Safety
21	BB3061BGS	1	OIL, 20oz
22	187623GS	1	KIT, Handle Hardware
23	187926GS	1	MANUAL, Owners
24	B3356GS	1	MANUAL, B & S Engine
25	188287GS	1	KIT, Nozzle Cleaning
26	B4224GS	1	SCREEN, Gun Inlet
27	97837GS	1	O-RING, Hi - Pressure
28	B5830GS	1	KIT, O-Ring Maintenance
29	B3335GS	1	WAND, Adjustable Nozzle
30	97566GS	1	HANG TAG, Nozzle
31	21761GS	1	NOZZLE, 1.05 Yellow Replcmnt
32	B5693GS	1	HOSE, 1/4" X 25'
33	A1041GS	1	FILTER, Chemical Hose
34	A1040DGS	1	HOSE, Chemical
35	48031GGS	1	CLAMP, Hose Band
36	98300GS	1	SEAL, Engine Donut
37	B1735GS	3	STUD, Double Ended
38	-----	1	PUMP, Assembly -(For replacement, order 209940GS)
38	209940GS	1	REPLACEMENT PUMP ASSEMBLY
39	B1880GS	3	NUT, M8 with Washer
40	21424GS	1	CONNECTOR, Garden Hose
41	B2516GS	1	CAP, Vinyl, Black
42	187918GS	1	DECAL, Quick Reference
43	95518GS	1	QC, Wand/Accessory
44	95519GS	1	QC, Wand End
45	48031BGS	1	CLAMP, Hose Band

# Pump

Note: Unless noted otherwise, use the standard torque specifications

Mfg. No: 1536-1



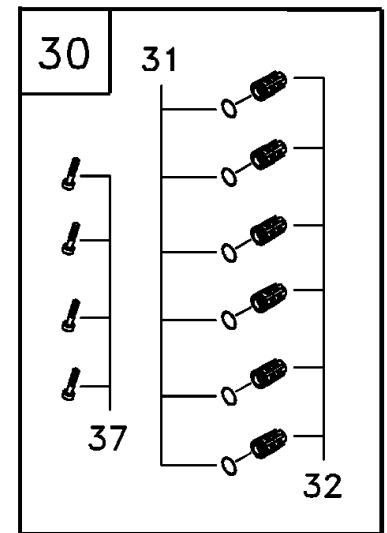
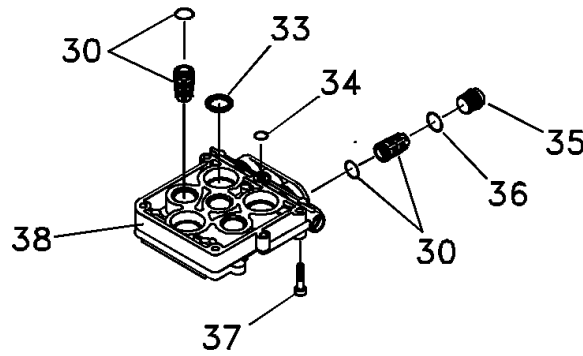
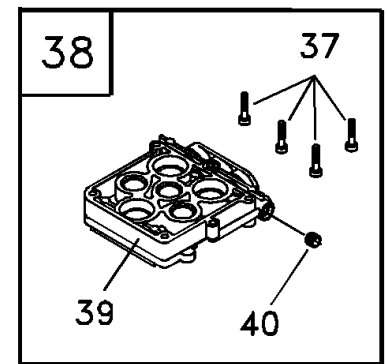
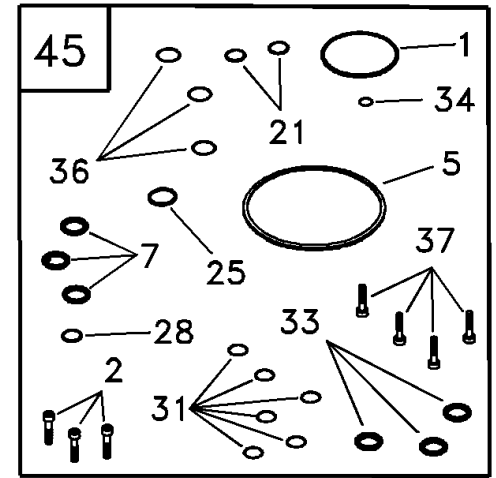
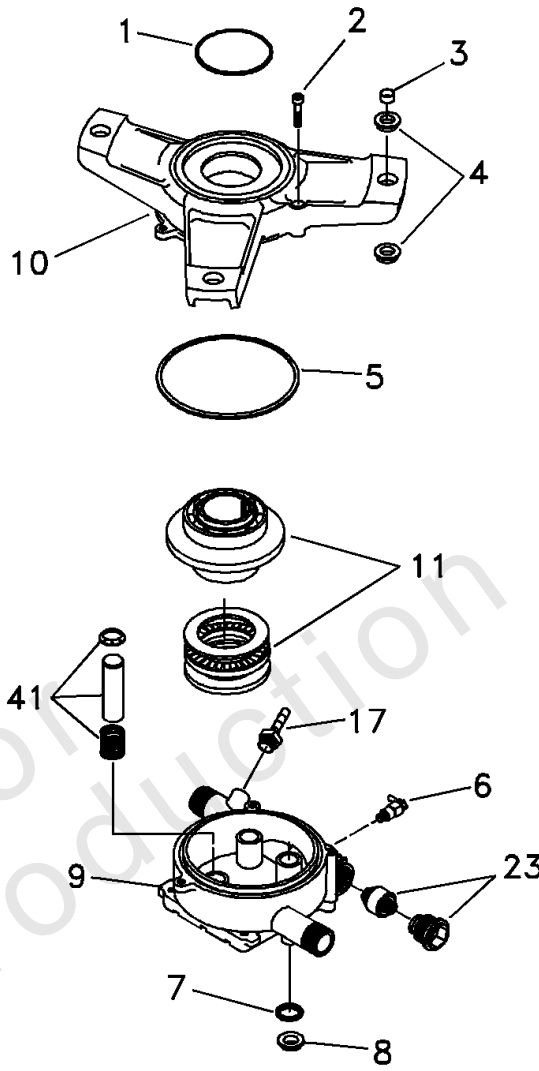
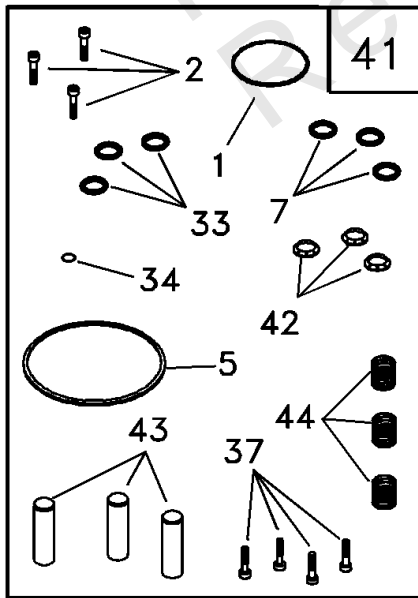
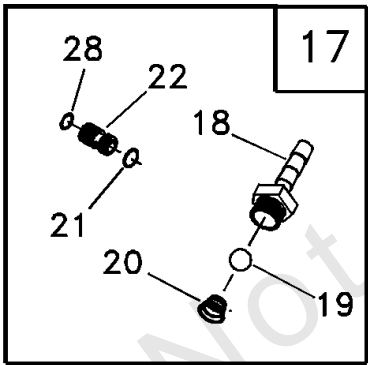
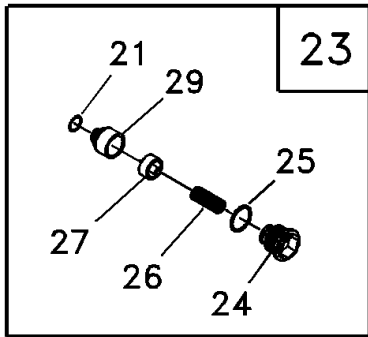
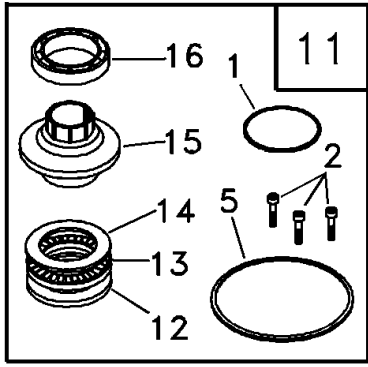
## Pump

REF NO	PART NO	QTY	DESCRIPTION
1	98300GS	1	SEAL, Engine Donut
2	97962GS	3	SHCS, M6 - 1 x 25
3	96795GS	3	SLEEVE, Grommet Spacer
4	21429GS	6	BUSHING, Rubber Mount
5	97835GS	1	O-RING, Housing Seal
6	21783GS	1	THERMAL RELIEF, GPW-EG
7	93680GS	3	SEAL, Oil Piston 15 TC4
8	97831GS	3	SPACER, Pilot
9	B2702GS	1	HOUSING, Piston
10	98227GS	1	ADAPTER, Engine
11	B2310GS	0	KIT, AXIAL CAM SERV -This item is a service kit and includes all parts shown within the box. Certain parts may only be available as components of a kit.
1	-----	1	SEAL, Engine Donut
2	-----	3	SHCS, M6 - 1 x 25
5	-----	1	O-RING, Housing Seal
12	-----	1	WASHER, Brg. 36 x 65 x 6Thk
13	-----	1	ASSY., Brg. Cage 45 x 65
14	-----	1	WASHER, Brg. 45 x 65 x 1
15	-----	1	CAM, Axial 5.6 VS
16	-----	1	BALL BEARING, 35 x 72 x 17
17	185287GS	0	KIT, CHEM INJECT -This item is a service kit and includes all parts shown within the box. Certain parts may only be available as components of a kit.
18	-----	1	FITTING, Chem Inject
19	-----	1	BALL, Chem Inject
20	-----	1	SPRING, Chem Inject
21	-----	1	O-RING, Venturi & Seat, Black
22	-----	1	VENTURI, Chem Inject
28	-----	1	O-RING, Venturi, Yellow
23	187879GS	0	KIT, UNLOADER -This item is a service kit and includes all parts shown within the box. Certain parts may only be available as components of a kit.
21	-----	1	O-RING, Venturi & Seat, Black
24	-----	1	CAP, Unloader
25	-----	1	O-RING, Unloader Cap
26	-----	1	SPRING, Unloader
27	-----	1	PISTON ASSY., Unloader
29	-----	1	SEAT, Unloader
30	B3513GS	0	KIT, CHECK VALVES -This item is a service kit and includes all parts shown within the box. Certain parts may only be available as components of a kit.
31	-----	6	O-RING, Check Valve
32	-----	6	ASSY., Check Valve
37	-----	4	SHCS, M6-1.0 x 35
33	B5433GS	3	SEAL, Double-Lip
34	97837GS	1	O-RING, Hi-Pressure Transfer
35	97841GS	3	CAP, Outlet Check Valve
36	97840GS	3	O-RING, Outlet CV Cap
37	40946GS	4	SHCS, M6-1.0 x 35
38	B4186GS	0	KIT, HEAD CASTING SFG
37	-----	4	SHCS, M6-1.0 x 35
39	-----	1	HEAD, Pump

# Pump

Note: Unless noted otherwise, use the standard torque specifications

Mfg. No: 1536-1





## Pump

REF NO	PART NO	QTY	DESCRIPTION
40	-----	1	PLUG, 1/8-28 W/VIRB
41	B2312GS	0	KIT, PISTON & SPRING -This item is a service kit and includes all parts shown within the box. Certain parts may only be available as components of a kit.
1	-----	1	SEAL, Engine Donut
2	-----	3	SHCS, M6 - 1 x 25
7	-----	3	SEAL, Oil Piston 15 TC4
5	-----	1	O-RING, Housing Seal
33	-----	3	SEAL, Double-Lip
34	-----	1	O-RING, High Pressure Transfer
37	-----	4	SHCS, M6-1.0 x 35
42	-----	3	RETAINER, Piston Spring
43	-----	3	PISTON, Dia. 15 x 65
44	-----	3	SPRING, Piston Return
45	B1933GS	0	KIT, O-RING/SEAL SERV -This item is a service kit and includes all parts shown within the box. Certain parts may only be available as components of a kit.
1	-----	1	SEAL, Engine Donut
2	-----	3	SHCS, M6 - 1 x 25
5	-----	1	O-RING, Housing Seal
7	-----	3	SEAL, Oil Piston 15 TC4
21	-----	2	O-RING, Venturi & Seat, Black
25	-----	1	O-RING, Unloader Cap
28	-----	1	O-RING, Venturi, Yellow
31	-----	6	O-RING, Check Valve
33	-----	3	SEAL, Double-Lip
34	-----	1	O-RING, High Pressure Transfer
36	-----	3	O-RING, Outlet CV Cap
37	-----	4	SHCS, M6-1.0 x 35

# Hardware Identification & Torque Specifications

Torque Specification Chart								
FOR STANDARD METRIC MACHINE HARDWARE (Tolerance ± 20%)								
Property Class	5.6		8.8		10.9		12.9	
	Class 5.6		Class 8.8		Class 10.9		Class 12.9	
Size Of Hardware	in/lbs	Nm.	in/lbs	Nm.	in/lbs	Nm.	in/lbs	Nm.
	ft/lbs		ft/lbs		ft/lbs		ft/lbs	
M3	5.88	.56	13.44	1.28	19.2	1.80	22.92	2.15
M4	13.44	1.28	30.72	2.90	43.44	4.10	52.56	4.95
M5	26.4	2.50	60.96	5.75	5.97	8.10	7.15	9.7
M6	44.64	4.3	7.3	9.9	10.3	14	12.1	16.5
M7	5.2	7.1	12.1	16.5	16.9	23	19.9	27
M8	7.7	10.5	17.7	24	25	34	29	40
M10	15	21	35	48	50	67	59	81
M12	26	36	61	83	86.2	117	103	140
M14	42	58	101	132	136	185	162	220
M16	64	88	147	200	210	285	250	340
M18	89	121	202	275	287	390	346	470
M20	126	171	290	390	405	550	486	660
M22	169	230	390	530	559	745	656	890
M24	217	295	497	375	708	960	840	1140
M27	320	435	733	995	1032	1400	1239	1680
M30	435	590	995	1350	1401	1900	1681	2280
M33	590	800	1349	1830	1902	2580	2278	3090
M36	759	1030	1740	2360	2441	3310	2935	3980
M39	988	1340	2249	3050	3163	4290	3798	5150

Torque Specification Chart						
FOR STANDARD MACHINE HARDWARE (Tolerance ± 20%)						
Hardware Grade	No Marks		SAE Grade 5		SAE Grade 8	
	SAE Grade 2		SAE Grade 5		SAE Grade 8	
Size Of Hardware	in/lbs	Nm.	in/lbs	Nm.	in/lbs	Nm.
	ft/lbs		ft/lbs		ft/lbs	
8-32	19	2.1	30	3.4	41	4.6
8-36	20	2.3	31	3.5	43	4.9
10-24	27	3.1	43	4.9	60	6.8
10-32	31	3.5	49	5.5	68	7.7
1/4-20	66	7.6	8	10.9	12	16.3
1/4-28	76	8.6	10	13.6	14	19.0
5/16-18	11	15.0	17	23.1	25	34.0
5/16-24	12	16.3	19	25.8	29	34.0
3/8-16	20	27.2	30	40.8	45	61.2
3/8-24	23	31.3	35	47.6	50	68.0
7/16-14	30	40.8	50	68.0	70	95.2
7/16-20	35	47.6	55	74.8	80	108.8
1/2-13	50	68.0	75	102.0	110	149.6
1/2-20	55	74.8	90	122.4	120	163.2
9/16-12	65	88.4	110	149.6	150	204.0
9/16-18	75	102.0	120	163.2	170	231.2
5/8-11	90	122.4	150	204.0	220	299.2
5/8-18	100	136	180	244.8	240	326.4
3/4-10	160	217.6	260	353.6	386	525.0
3/4-16	180	244.8	300	408.0	420	571.2
7/8-9	140	190.4	400	544.0	600	816.0
7/8-14	155	210.8	440	598.4	660	897.6
1-8	220	299.2	580	788.8	900	1,244.0
1-12	240	326.4	640	870.4	1,000	1,360.0

The guides and ruler furnished below are designed to help you select the appropriate hardware.

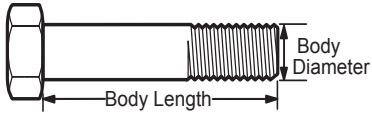


Nut, M8

Thread Diameter (mm)

Inside Diameter (in)      Threads per inch

Nut, 1/2-16



Screw, M8- 1.25 x 25

Thread Diameter (mm)      Distance between threads (mm)      Body Length (mm)

Body Diameter      Threads per inch      Body Length (in)

Screw, 1/2- 16 x 2



## Standard Hardware Sizing

When a washer or nut is identified as 1/2" (M8), this is the *Nominal size*, meaning the *inside diameter* is 1/2 inch (8mm metric thread diameter); if a second number is present it represents the *threads per inch* (distance between threads).

When bolt or capscrew is identified as 1/2 - 16 x 2" (M8 - 1.25 x 50), this means the *Nominal size*, or body diameter is 1/2 inch (8mm metric thread diameter), the second number, 16, represents the *threads per inch*, (*distance between threads*). The final number is the body length of the bolt or screw, 2 inches (50mm).

## NOTES

- These torque values are to be used for all hardware excluding: locknuts, self-tapping screws, thread forming screws, sheet metal screws and socket head setscrews.
- Recommended seating torque values for locknuts:
  - for prevailing torque locknuts - use 65% of grade 5 torques.
  - for flange whizlock nuts and screws - use 135% of grade 5 torques.
- Unless otherwise noted on assembly drawings, all torque values must meet this specification.

## Common Hardware Types

Hex Head Capscrew



Washer



Carriage Bolt



Hex Nut

## Wrench & Fastener Size Guide

1/4" Bolt or Nut Wrench—7/16"	5/16" Bolt or Nut Wrench—1/2"	3/8" Bolt or Nut Wrench—9/16"	7/16" Bolt or Nut Wrench (Bolt)—5/8" Wrench (Nut)—11/16"	1/2" Bolt or Nut Wrench—3/4"
M6 Bolt or Nut Wrench—10mm	M8 Bolt or Nut Wrench—13mm	M10 Bolt or Nut Wrench—17mm	M12 Bolt or Nut Wrench—19mm	M14 Bolt or Nut Wrench—22mm

